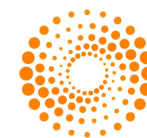




SDC PLATINUM: Mergers & Acquisitions (M&A)



THOMSON REUTERS

LEARNING OUTCOMES

By the end of this module you will:

- Gain an understanding of the M&A deals component within the T1 Banker framework and SDC desktop products
- Know how to perform advanced searches using various search criteria
- Know how to display this in different reporting outputs: Transaction-by-Transaction report; League Tables; Volume Analysis
- Gain an understanding of the content of the module and when to refer certain client data issues to the relevant teams for further investigation
- Gain an understanding of front line technical processes with regards to such reported issues
- Practice answering some real-life client issues



PROCEDURES

Customer support has four dimensions to its responsibility:

- 1) Product functionality issues; understanding what data the client is trying to obtain and how we can use the product, whether directly or indirectly, to retrieve this
- 2) Content – working with content teams in providing an understanding of the data for the client. To achieve this, it is expected that we increase our financial markets knowledge through various means (e.g. internal/external certification). But where appropriate, we may refer certain queries to content i.e. concerns over suspect data
- 3) Technical issues – involved in first line diagnostics and referring it once obtaining the necessary details: (screenshot of error message; ID and steps leading up to error)
- 4) Certain administrative tasks – checking product IDs with Entitlements and passing on Sales issues to account managers



SDC Platinum: Introduction

A financial transactions database that covers **New Issues**, **Mergers & Acquisitions (M&A)**, syndicated loans, private equity, project finance, poison pills, among others

*SDC: Securities Data Company

Reference:

http://thomsonreuters.com/products_services/financial/financial_products/deal_making/investment_banking/sdc

M&A OVERVIEW

Mergers & Acquisitions (M&A) - Global Transactions since 1977 - M&A

The Deals company-specific Merger & Acquisition pages list detailed merger-and-acquisition transaction data and include announced date, effective date, target, target advisor, transaction statistics, target financials, acquiror, acquiror advisor, acquiror financials, status, rank value and deal synopsis.

- 400,000+ Global Transactions Since 1977 - Mergers & Acquisitions
- Tender Offers
- Spin Offs
- Stake Purchases
- Repurchases
- MBOs/LBOs
- Rumored and Seeking Buyer Transactions



M&A PRE-BUILT REPORTS

M&A Announced/Completed Deals: provides you with a large table of Announced/Completed Deals that is refreshed on a daily basis.

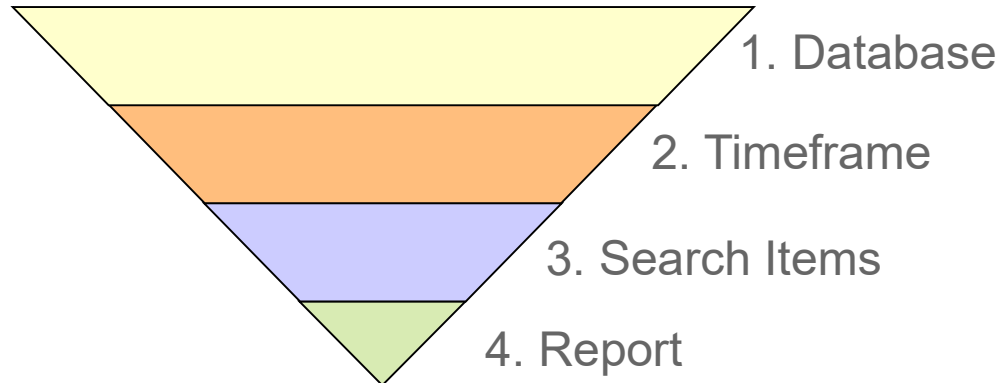
M&A League Tables: based upon a single set of globally consistent criteria, submission guidelines, transaction classifications and eligibility rules, allowing you to accurately analyze transactions from around the world

Custom League Tables: identify the leading deal financial and legal advisors in rank order. Updated in real time.

M&A Volume Trends: reports aggregate deal totals by period, industry and geographical regions



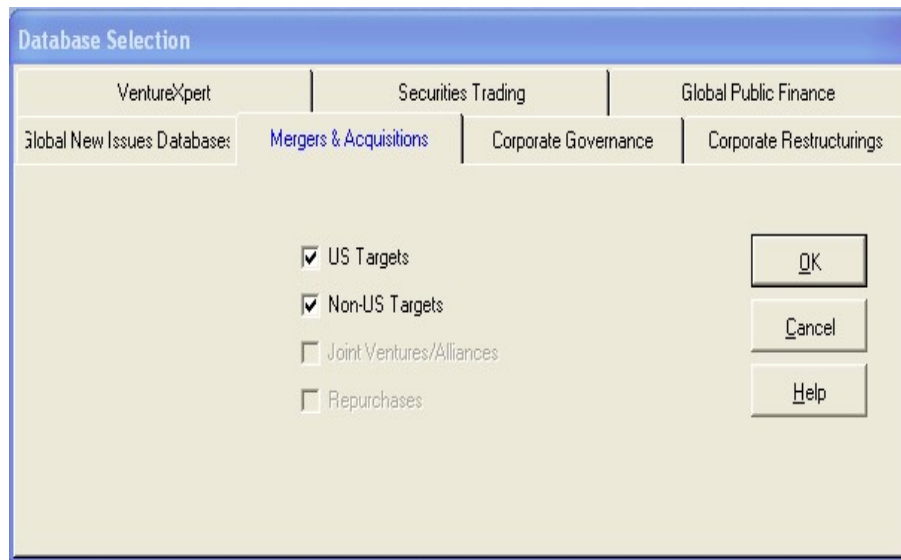
M&A ADVANCED SEARCH



This is the primary deals screening tool allowing you to filter for deals according to your specific report criteria:

1. Database: Asset Class (M&A)
2. Timeframe: Deal was announced/completed
3. Search Items: Specific M&A deal criteria
4. Report: Deal Report, League Tables, Volume Analysis

Database



Choose **Mergers & Acquisitions** tab

Tick ☒ **US Targets** and ☒ **Non-US Targets** by default

Click **OK**

Timeframe

The screenshot shows a 'Date Announced' dialog box with the following details:

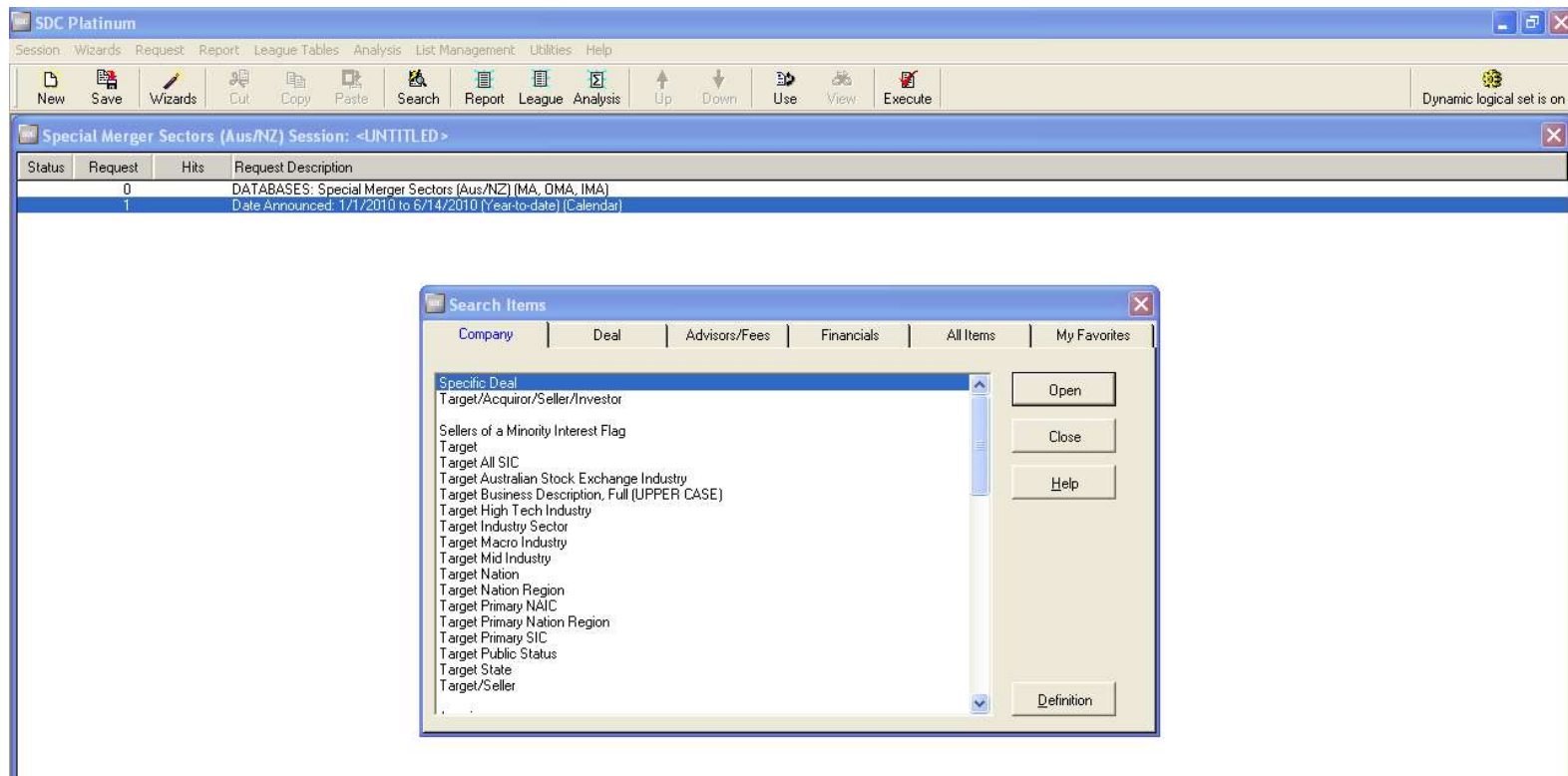
- Calendar Dates** tab is active.
- Radio buttons:**
 - ☐ Last: 1 Day
 - ☐ This: Day
 - ☒ Year-to-date
 - ☐ All
 - ☐ Custom: From 1/1/2010 To 6/14/2010
- Buttons:** OK, Cancel, Help

Select the required or specified Announcement date

**** Announcement date:** The date on which the deal was first disclosed to the public. It can be announced through the news or regulatory filings.

Search Items

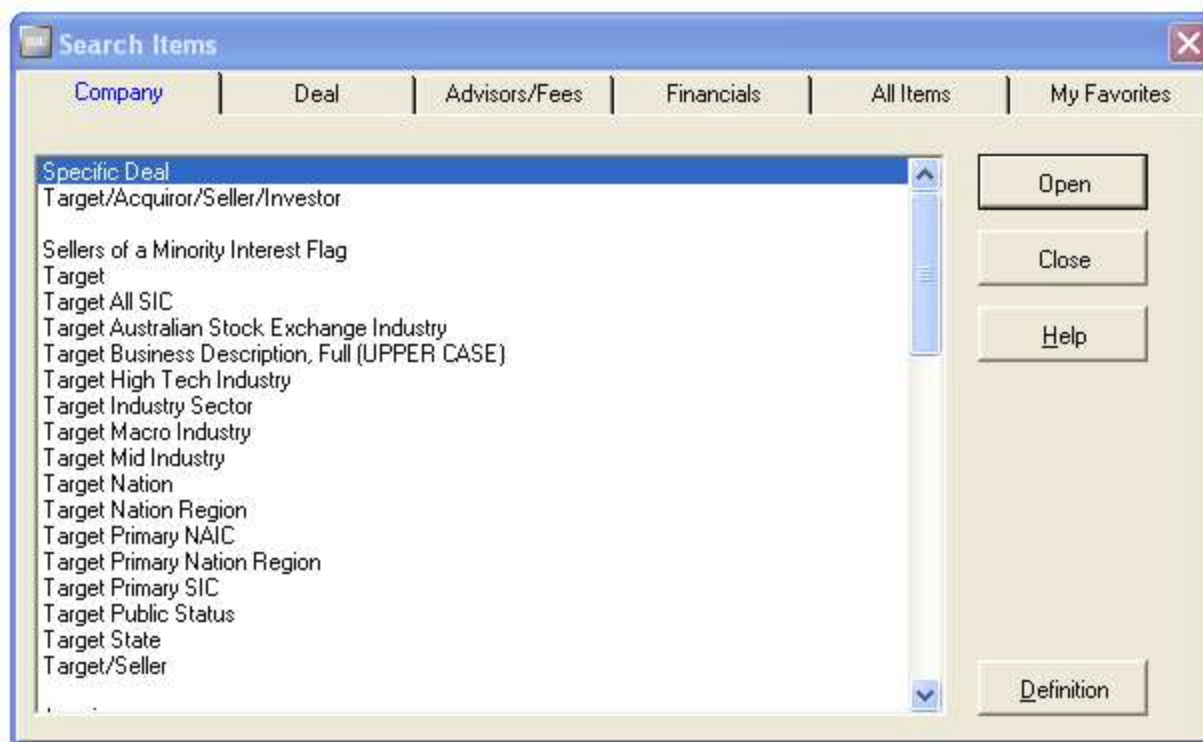
SDC Platinum will appear this way:



Search Items

Refine search criteria by selecting the specific fields in the **Search Items** box:

Overview of Search Items (refer to product for complete list)



Reports

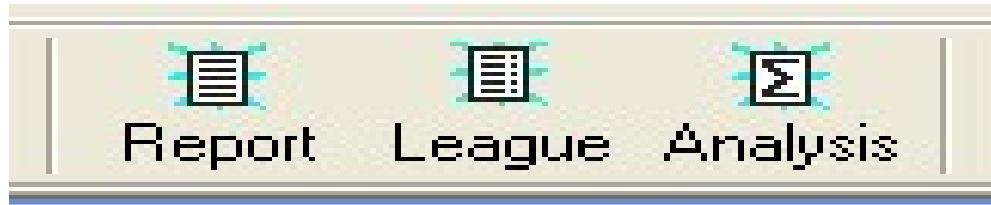
Reports can be generated through the following functions of the Menu bar:



Report League Tables Analysis

(Note: Refer to product for customization of reports)

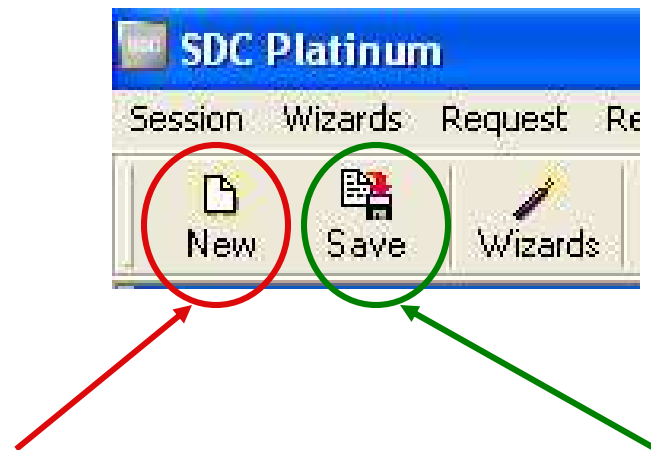
Alternately, these icons can also be used for generating reports:



Additional Functions



Shortcuts:

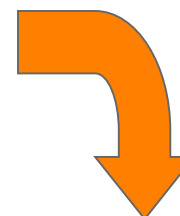


Click "New" icon
to create a new
M&A search

Click "Save" icon to
save session details

Additional Functions

(a) The “View” function: **Result**



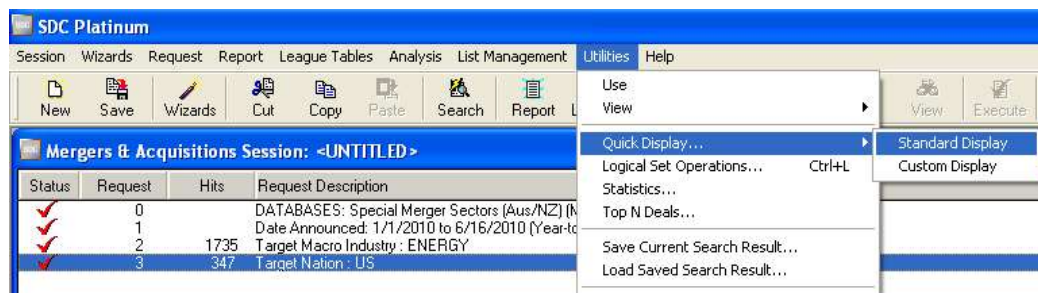
The “View” function shows the breakdown of a certain search criteria based on the number of International Mergers (Non-USA) and Merger/Corporate Transaction (USA only)

The screenshot shows the 'Search Breakdown' window. It contains a table with two columns: 'Category Description' and 'Category Hits'. The table has three rows: 'International Mergers' with 1388 hits, 'Merger/Corporate Transactions' with 347 hits, and a 'TOTAL' row with 1735 hits. The 'TOTAL' row is highlighted. The window has 'OK' and 'Help' buttons.

Category Description	Category Hits
International Mergers	1388
Merger/Corporate Transactions	347
TOTAL	1735

Additional Functions

(b) The “Quick Display” function: **Standard Display**

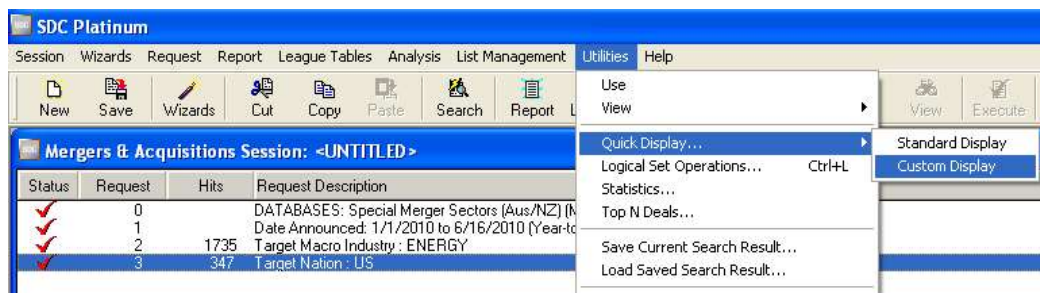


This shows a brief display of deals that fall under a specified criteria. It is classified by Date, Target, Acquiror, Rank Value, and Deal Number

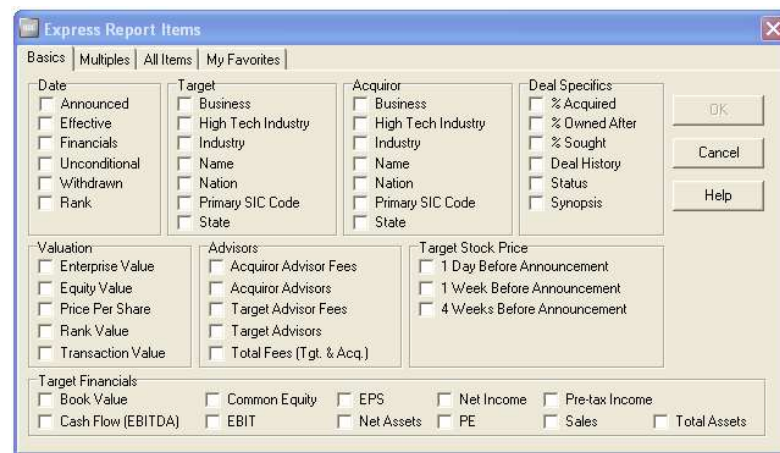
Date	Target	Acquiror	Value	Deal No
01/01/2010	San Gabriel River Ranch and I-	Acqua Texas Inc	0.000	2162016020
01/04/2010	Jones & Frank Corp	BB&T Capital Partners LLC	0.000	2143905020
01/04/2010	Interstate Transmission Line	Minnesota Power Inc	70.000	2143779020
01/04/2010	Sanimax USA Inc-Grease Bus	Darling International Inc	0.000	2143382020
01/04/2010	MGS Corp	Inergy Propane LLC	0.000	2148228020
01/04/2010	Capline Pipeline	Plains All American Pipeline	64.000	2143774020
01/04/2010	Arturus Capital Ltd-Cert Shall	Blackgate Resources LLC	7.265	2143351020
01/04/2010	Ellora Energy Inc-Hugoton	Undisclosed Acquiror	247.000	2143417020
01/04/2010	Chesapeake Energy-Upstream	Total E&P USA Inc	2250.000	2143313020
01/05/2010	Pryme Lakes Exploration LLC	Future Corp Australia Ltd	0.000	2144169020
01/05/2010	Suncor Energy-Rockies Upstream	Noble Energy Inc	494.000	2144165020
01/05/2010	Blackgate Resources LLC	Modena Resources Ltd	23.988	2144009020
01/05/2010	Earth Explorations-Mine Pty	Green Mining Technologies Ir	0.800	2144064020
01/06/2010	Intracoastal Pipeline	Crosstex Energy LP	10.000	2144090020
01/06/2010	Montana Shale Play	Endeavour International Corp	3.750	2144157020
01/06/2010	Cohort Energy-Marcellus Plays	Endeavour International Corp	15.000	2144156020
01/06/2010	Alternative Fuels Americas	Netspace Int Hlds Inc	0.000	2144542020
01/06/2010	Cedar Resources Corp	1st NRG Corp	1.500	2144548020

Additional Functions

(c) The “Quick Display” function: Custom Display

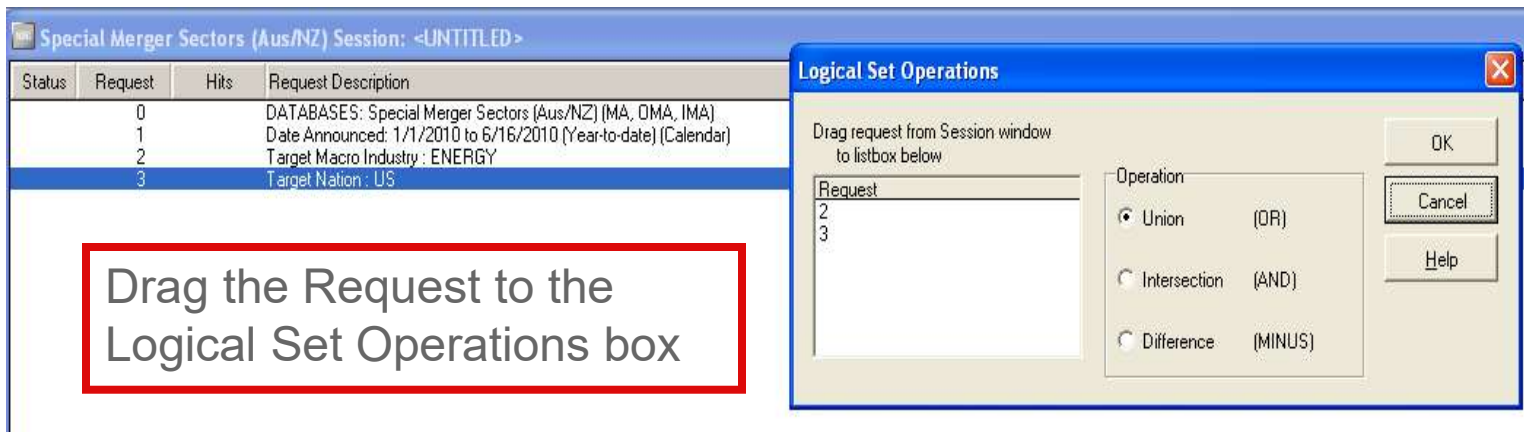
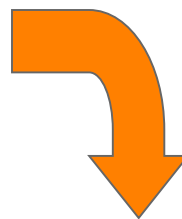
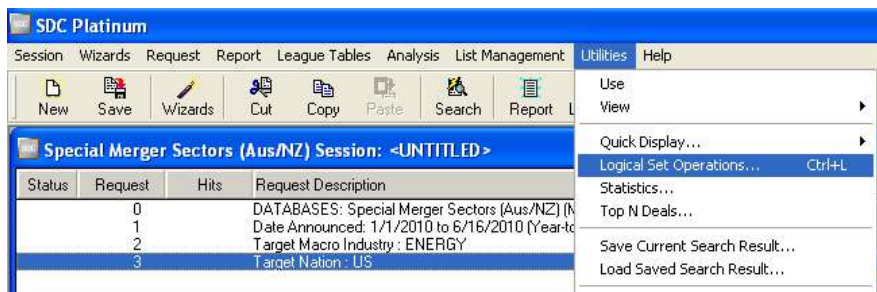


This is a brief but customizable/editable display of deals based on criteria specified by the user.



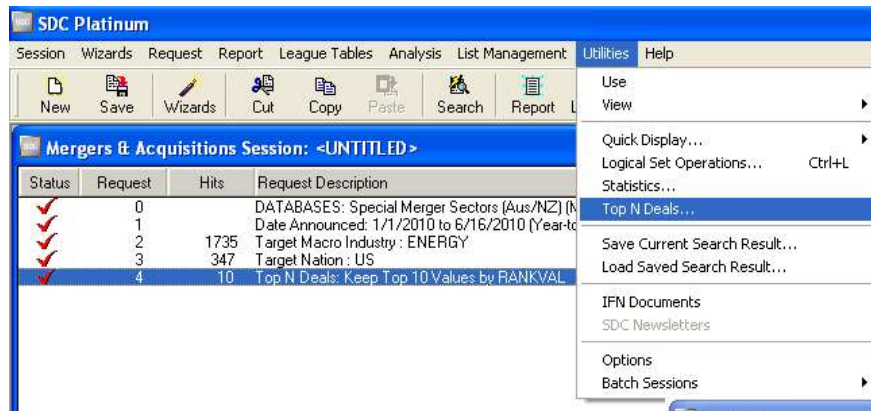
Additional Functions

(d) Logical Set Operations

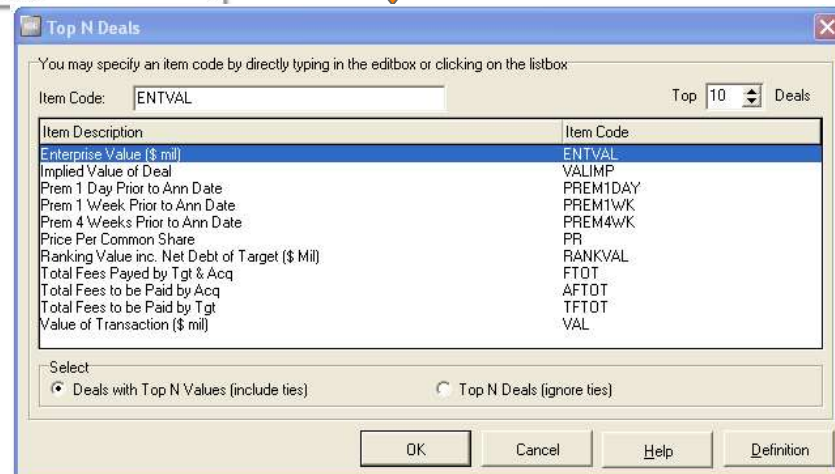


Additional Functions

(e) Top N Deals



It reports on the top deals that fall into your session constraints. Change the number of deals to be displayed in the upper right hand corner and the basis of the selection under Item Description.



Notes / Q&A

Thank you and have a nice day! 😊

